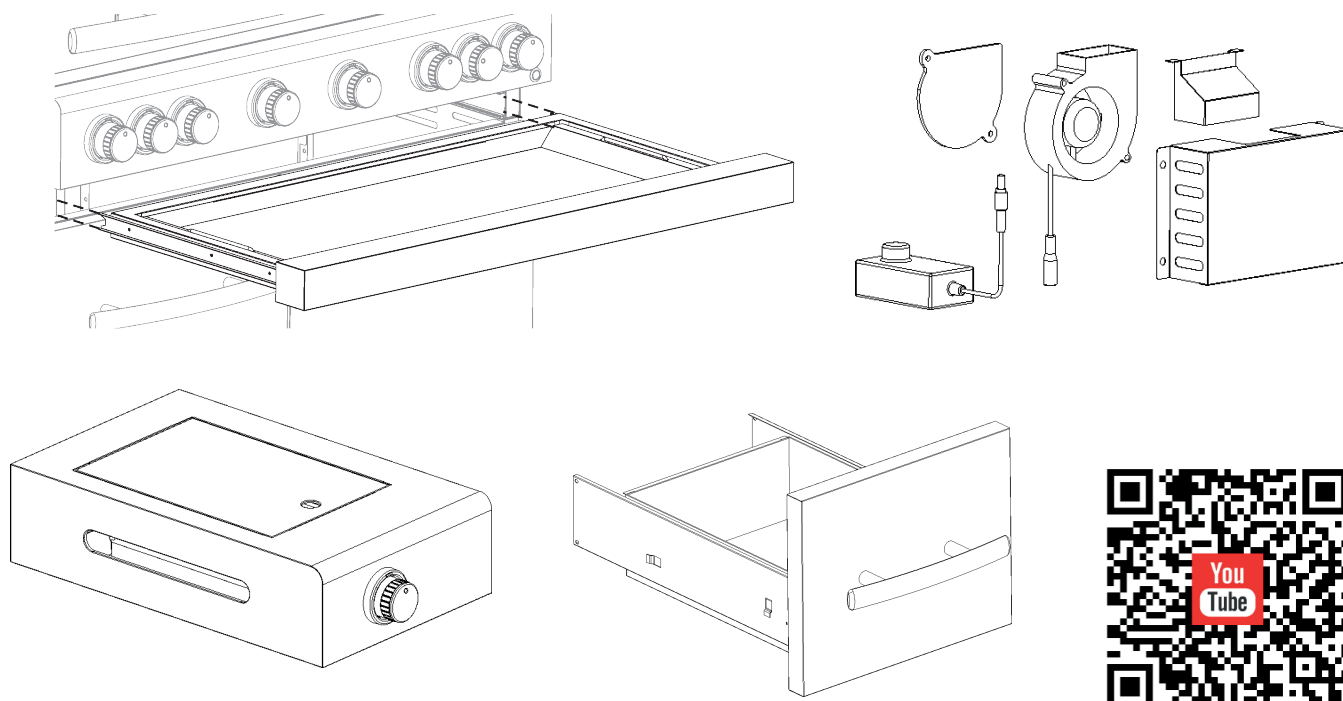


Operating and assembly instructions



Optional accessories for your ALL'GRILL CHEF Modular



ATTENTION

- FOR OUTDOOR USE ONLY.
- READ THE ASSEMBLY INSTRUCTIONS CAREFULLY BEFORE STARTING THE ASSEMBLY.
- WARNING: ACCESSORIES MAY BE HOT; PLEASE KEEP CHILDREN AWAY.
- THESE PARTS MUST BE KEPT AWAY FROM COMBUSTIBLE MATERIALS.
- AFTER USE, PLEASE TURN OFF THE GAS SUPPLY.
- OPTICAL & TECHNICAL CHANGES POSSIBLE AT ANY TIME.

WHAT YOU SHOULD DO:

- Please tighten all gas connections.
- Check all pipes for damage, cuts or cracks.
- Always carry out a leak test with soapy water.
- Check all burners regularly for blockages caused by spiders or similar. Such blockages can be dangerous and must be cleared regularly.
- Only use approved gas cylinders.
- Always wear protective gloves when handling hot parts.
- Clean and maintain the appliance after each use.
- Place the barbecue at least 1.5 m from the wall.
Do not place near flammable material, petrol or liquids.
- After grilling, set the burners of the grill station to the hottest position and let it burn like this for 5-15 minutes. This burns off residues from grilling and makes the grill easier to clean afterwards. Leave the bonnet open when doing this. Afterwards, do not forget to close the gas supply.

WHAT YOU SHOULDN'T DO:

- Do not lean over the grill during operation (always ignite with the lid open).
- Keep flammable liquids and materials near the appliance.
- Use the appliance with a weather protection cover.
- Use plastic or glass on the hot grill.
- Use in strong wind.
- Dismantle the valve, etc. on your own.
- Carry out a leak test with an open flame.
- Store the spare bottle in the base cabinet.
- Store gas bottle lying down (always stand upright).
- Use in closed rooms.
- Make structural changes.
- Move the barbecue during use.
- Do not obstruct the ventilation of the appliance.
- Do not allow the gas hose or electrical cables to come into contact with the appliance while it is hot.
Do not use coal or other solid fuels.
- Disconnect gas connections while the appliance is in operation.
- Do not use rusty or dented gas cylinders.
- Leave unattended during operation
- Remove the gas blanking plug from the left-hand side panel in the basic model.

Gas type

This appliance is only suitable for use with low pressure butane, propane or their gas mixtures and is fitted with the appropriate low pressure regulator via a flexible hose. The appliance is ready for use with 50mbar butane, propane or their mixtures of category 13B / P (50).

Gas hose and gas regulator

Only use regulators and hose that are approved for low pressure gas.

The pressure regulator should comply with the EN16129 standard and be up to date.

It is recommended to replace the pressure regulator at least every 6 years.

The hose must be a minimum of 0.7m long and a maximum of 1.5m and must comply with the standards of the respective country.

A worn or damaged hose must be replaced.

Make sure the hose is not clogged, kinked or pinched.

It is recommended to replace the hose every 6 years from the date of manufacture.

Make sure that the hose is secured against twisting during installation.

WARNING !!

**WEAR PROTECTIVE GLOVES DURING USE AND CLEANING.
THE USER MUST CONNECT THE COMMERCIALY AVAILABLE GAS HOSE AND GAS PRESSURE
REGULATOR OF THE RESPECTIVE COUNTRY.
DO NOT DISMANTLE OR MODIFY SEALED PARTS!**

Storage of the grill

When the appliance is not in use, it may only be stored in closed rooms if the gas supply has been closed and the gas bottle has been removed. If the appliance is not used for a longer period of time, store it in a dry place and protect it from external influences

GAS CYLINDER:

The gas cylinder should not be thrown. When the appliance is not in use, do not leave the gas bottle connected to the appliance. When changing the gas bottle, keep all open flames away!

The bottle must be stored outdoors in an upright position out of the reach of children. Do not store the gas bottle where temperatures exceed 50°C and protect it from direct sunlight. Keep the gas bottle away from open flames.

Connection:

Before connecting, make sure that there is no particle or foreign body in the connection of the gas bottle/gas hose/gas pressure regulator.

If the hose needs to be replaced, make sure that the connection size is correct.

After each change of gas hose, regulator or bottle, a leak test must be carried out. Please follow the instructions below to check for gas leakage:

- check that the gas valve is set to "OFF/AUS".
- Connect the bottle to the regulator, the regulator to the hose and the hose to the appliance. Make sure the connections are tightened and turn on the gas.
- Apply soapy water to the hose and all connections. If bubbles form, this means that

there is a leak. Check if the parts are connected correctly or replace them.

- Repeat the test after troubleshooting.
- After a successful test, please turn off the gas supply again.

CAUTION!!!

FOR GAS LEAKS THAT DO NOT OCCUR AT THE CONNECTIONS, CONTACT YOUR GAS SPECIALIST, INSTALLER OR SALESPERSON.

Ignition with a match or lighter:

1. open the lid and make sure all burners are off.
2. press the knob and turn the knob anticlockwise to the **HIGH (+)** level, then press the igniter for 2-3 seconds so that the burner ignites. If the burner does not light, turn the knob back and repeat the process again after 5 minutes.
3. adjust the flame height by turning the knob to the **HIGH / LOW** position. The backburner should always be operated on the high setting (+).
4. To light the other burners, repeat the process in order until all burners are lit. To switch off the grill, turn the gas bottle closed and the burner controls to **"OFF"**.

Ignition with a match or lighter:

1. Follow steps 1-3.
2. To light the main burner, take a long match or stick lighter and light it. Hold it to the burner hole on the right side of the firebox.
For the side burner, place the match on the holes of the side burner.
3. Push in the control knob and turn it anticlockwise to **HIGH** and the burner should come on. If the burner does not light, turn off the gas, wait 5 minutes and repeat the procedure (step 2-3).

The side burner is designed for pots/pans with a Ø of 180-260 mm. Do not use the side burner lid as a work table. Before using for the first time, light all the main burners and heat up for 15 minutes with the lid closed and the knob set to **HIGH(+)**. This process will "burn out" the grill. The colour of the cooking surface may change due to

Cleaning & Maintenance

Do not carry out any maintenance or cleaning until the appliance is cold and the gas bottle is closed.

Do not clean the grill with oven cleaner.

DO NOT use abrasive or flammable cleaners as they may burn or damage the appliance.

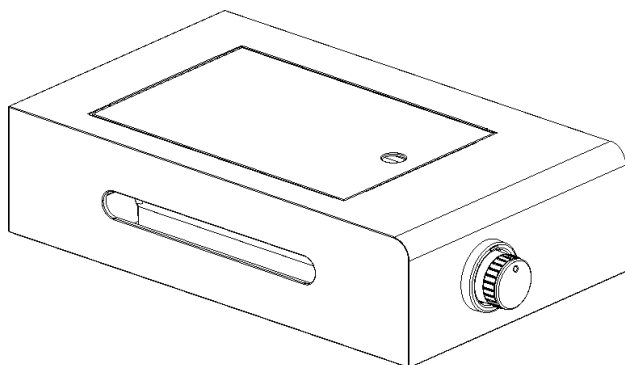
Plastic parts: Clean with soapy water and dry.

Stainless steel surfaces : See stainless steel care instructions in the appendix!

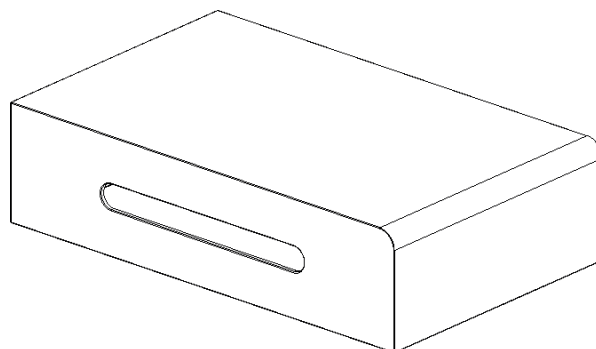
Grill grate: Can be cleaned with a mild soapy water solution (nothing abrasive) or burn out in the grill and clean with the wire brush, then oil a little.

Optional accessories for your ALLGRILL CHEF Modular

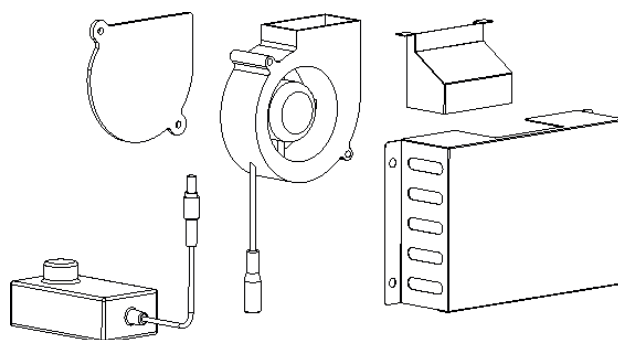
1. Infrared side burner Steakzone® left (Art. No. 600 o. 800)



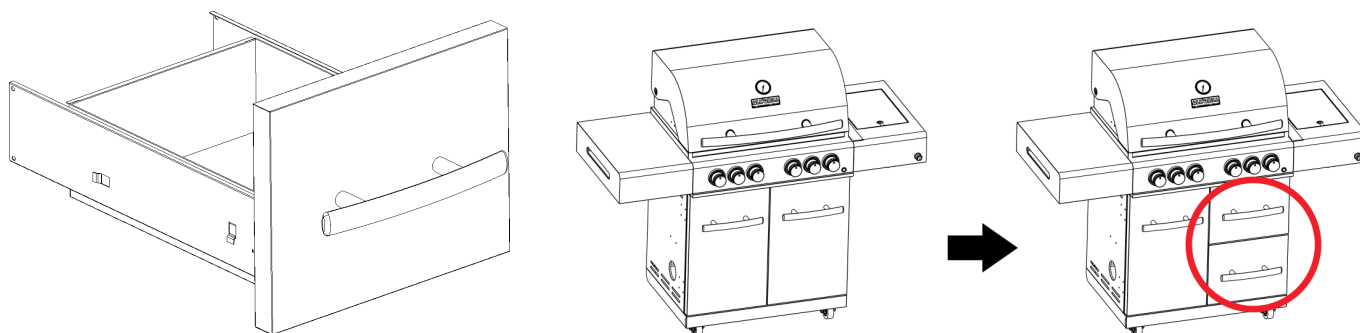
2. side part left shelf (Art. No. 200)



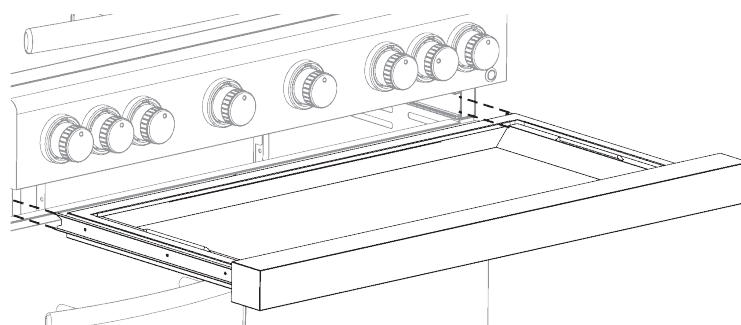
3. AIR SYSTEM (Art. Nr. 750)



4. Drawer system (Art.Nr. 944 o. 988 / 744 o .988 Black)for CHEF L und XL



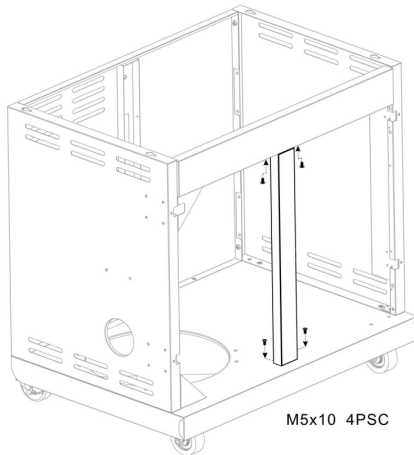
5. Grease drawer



Disassemble the support brackets on the right side and the door hinges and check the correct assembly of the door center brace.

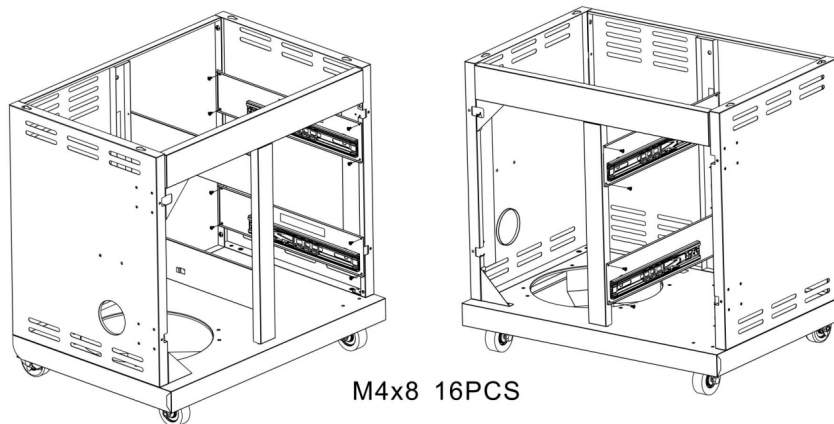


1.

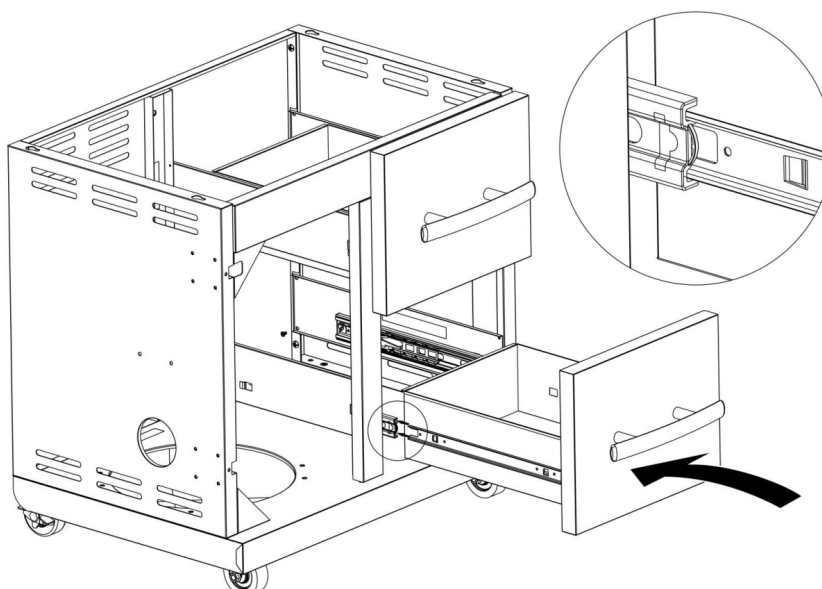


Mounting guide rails

Screw the guide rails to the support strut and the substructure



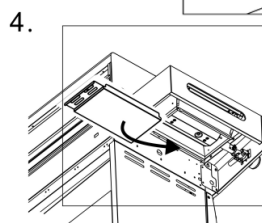
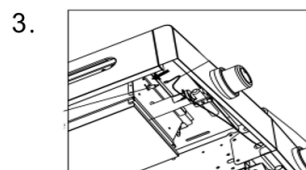
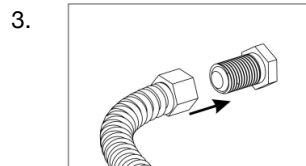
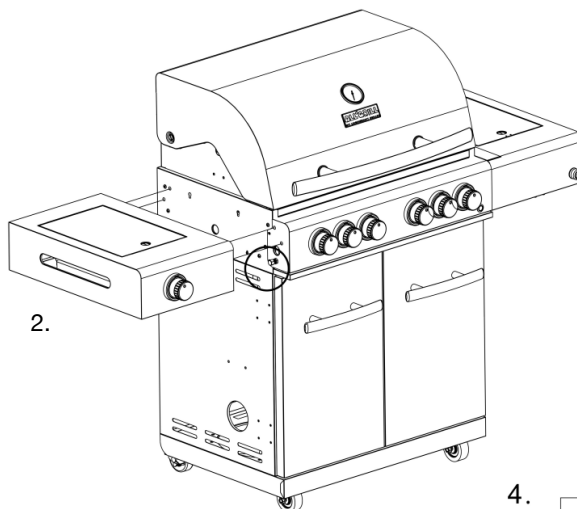
Insert drawers



Mounting infrared side burner Steakzone® (Art. No. 600 o.n 800) optional Modular



1. remove the blind plug from the gas connection.
2. mount the left side part
3. connect the gas hose and the ignition cable
4. insert the grease drip tray from behind



Make a 100% tight connection between grill and side burner!

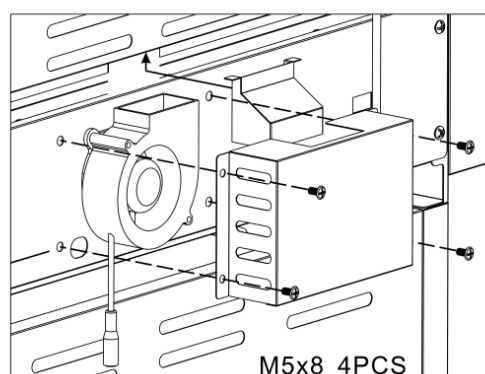
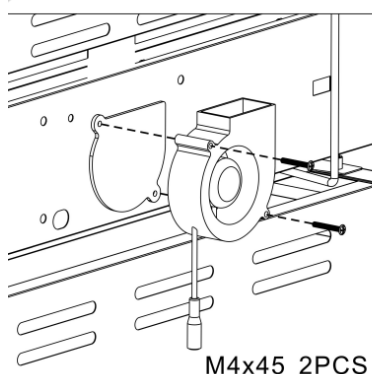
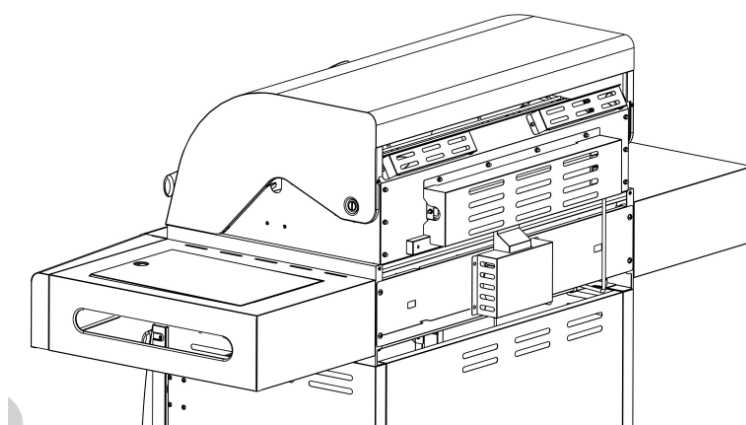
Ignition cable / lighting cable

Remove the grease drawer to route the ignition and lighting cable (stowed under the front panel on the left) above the gas manual through the hole to the outside.

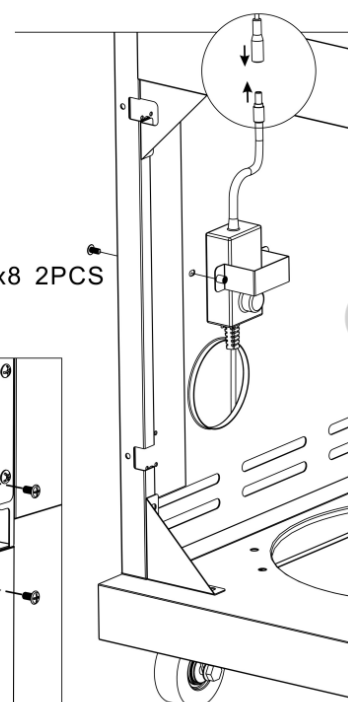
Mounting AIR SYSTEM (Art. No. 750) optional Modular



1. mount the AIR SYSTEM blower on the back of the grill.
2. mount the cover over the blower eyelet
3. connect the AIR SYSTEM controller and mount it on the inside of the side panel.

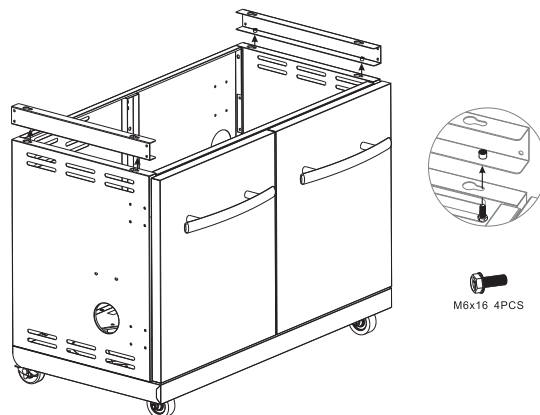
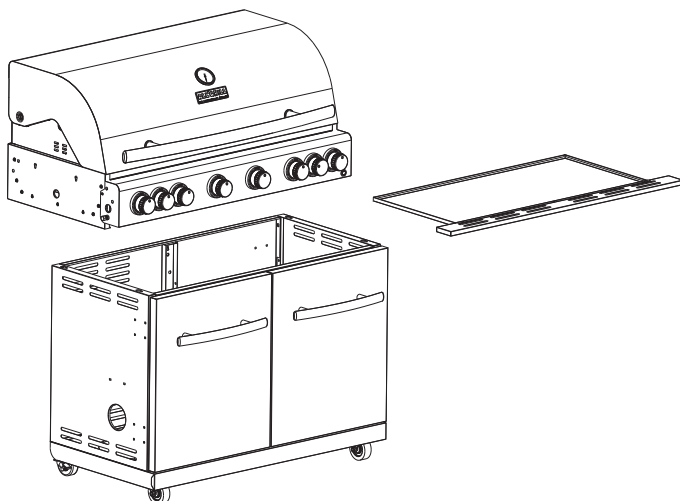


M5x8 2PCS



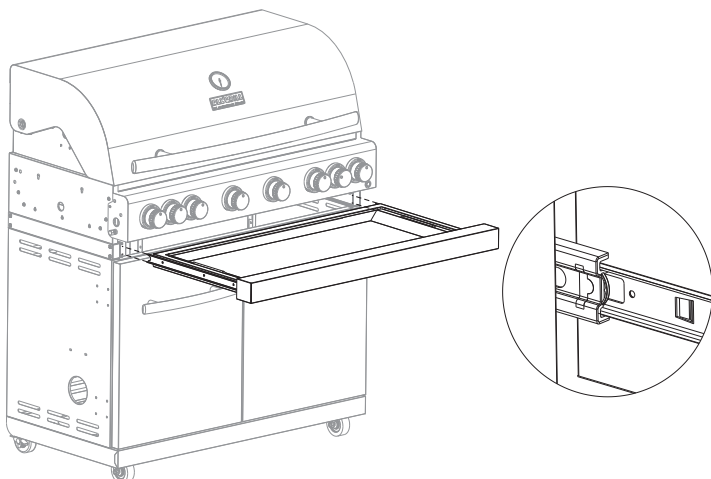
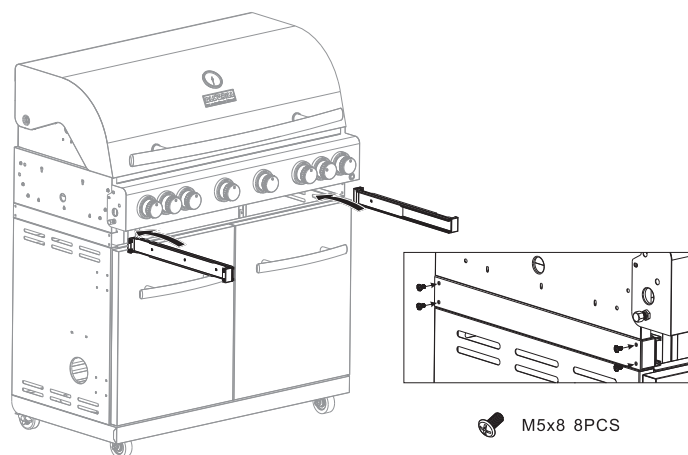
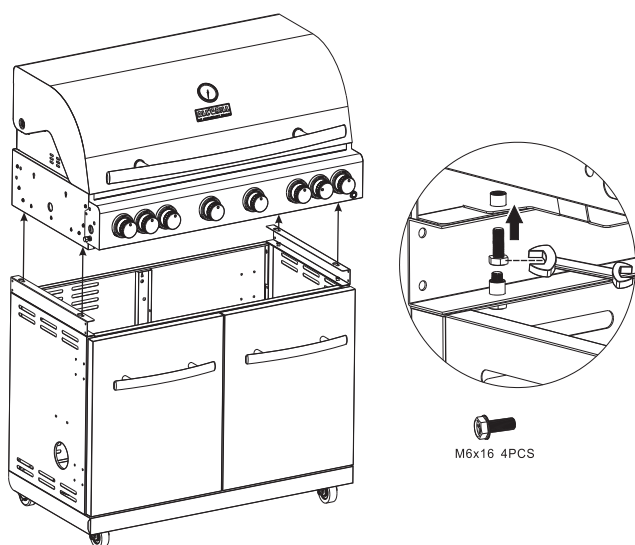
1. remove standard fat drawer, disassemble fire box and disconnect cable connections.

2. Mount frame on barbecue cart



3. Mount the fire box on the frame of the fat drawer

4. Assemble telescopic slides



5. Inserting the new grease drawer module into the telescopic pullouts

Disposal & Declaration of Conformity

DISPOSAL

Packing

The packaging is made of environmentally friendly materials that you can dispose of at local recycling points.



Grill

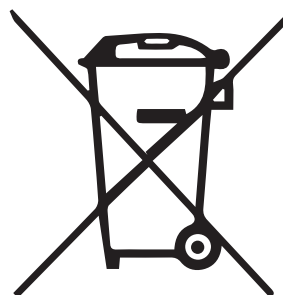
Never throw the barbecue into the normal household waste! Dispose of it via an approved waste disposal company or via your municipal waste disposal facility. Observe the currently valid regulations. In case of doubt, contact your waste disposal facility.



Batteries and rechargeable batteries

Please do not dispose of batteries in household waste. Every consumer is legally obliged to hand in batteries at a collection point in their municipality / district or at a retailer. This enables them to be disposed of in an environmentally friendly manner.

Batteries containing harmful substances are marked with the symbols Cd for cadmium, Hg for mercury and Pb for lead. Batteries are marked with the symbol shown next to them.



Declaration of conformity

This product complies with the applicable European and national directives. This is confirmed by the CE marking (corresponding declarations are deposited with the manufacturer).